



# *Kankakee County Transportation Initiatives*

*Volume 3, December 2014*

Table of Contents	Page
• Introduction	2
• Metropolitan Planning Organization	3-4
• MPO Documents	5
• MPO Project Updates and Map	6-7
• IDOT Area Project Updates	8-9
• Illiana Expressway Study Update	10-11
• Transit Updates	12-13
• Transportation Safety Committee	14-15
• 6000 N. Road Interchange Update	16-17
• Long -Range Transportation Plan	18-19
• Citizen Input and Website Update	20

# Introduction



Kankakee County first published the Transportation Brochure in 2008, with a second issue in 2011. This is the third issue. Since the 2008 issue, a number of changes have taken place in the leadership roles of almost every agency involved in the transportation arena in Kankakee County.

The 2008 and 2011 brochures each mentioned the coming interchange at Bourbonnais Parkway (6000 N. Road). This issue contains some up to date information on this important project.

The 2008 and 2011 brochures each discussed the Illiana Expressway in general. This issue shows the most recent plans for the project, along with some information on why this project is so important to Kankakee County.

Urban and rural transit are each discussed in this brochure, as they have been in each past brochure. Project updates are provided on past transportation projects, as are projects that are in the Illinois Department of Transportation Program through 2018.

This issue will mark the first time that information on fatal and serious traffic crashes is contained in the document, and reflects a new direction for the transportation program in Kankakee County.

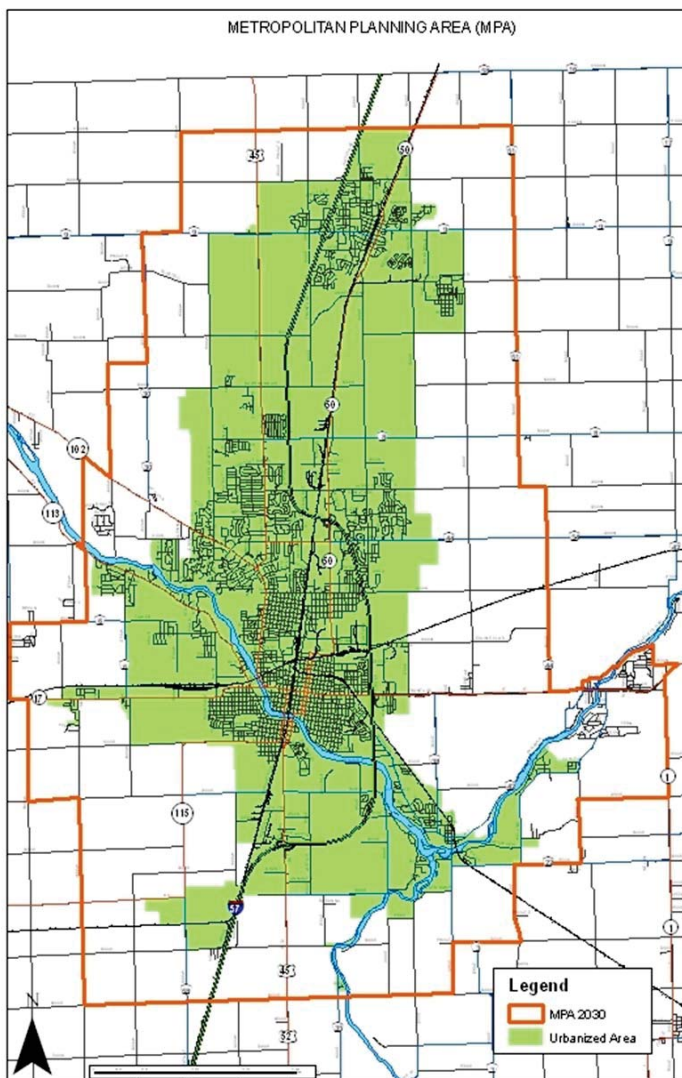
This issue also contains information about the Long-Range Transportation Plan, and summarizes the process that is taking place to provide transportation planning to the year 2040.

This brochure documents efforts in the public participation area, including the website of the Kankakee County Planning Department.

# What is the Kankakee Area Metropolitan Planning Organization?

**By Federal law, when an urban area reaches the 50,000 population level, a Metropolitan Planning Organization (MPO) is required to exist for that area. This level of population was reached in the 1980 census for the Kankakee Urbanized Area, and the Kankakee Area Transportation Study was created in 1983 to meet the requirements of that law.**

**The physical boundaries of the Kankakee Area Transportation Study have changed with each decennial census. The boundaries, as a result of the 2010 census, are shown in the map below. The Urbanized Area is shaded in green, and the Metropolitan Planning Area (area that is presumed to be in the urbanized area in 30 years) is outlined in orange.**



**The current members of the MPO are the City of Kankakee, the Villages of Aroma Park, Bourbonnais, Bradley, and Manteno, Kankakee County, the Illinois Department of Transportation, the River Valley METRO Mass Transit District, and the Kankakee Valley Airport Authority . The MPO is governed by a Policy Committee of elected and appointed members, and is advised by a Technical Advisory Committee which is made up of technical personnel from the nine member agencies.**

**The MPO Urbanized Area has expanded due to the 2010 census, The Village of Manteno has become a member of the MPO as a result of the expansion. The Kankakee Valley Airport Authority has also become a member.**

**The MPO committees meet on a regular basis to discuss current progress and future needs in transportation planning.**



# Kankakee Metropolitan Planning Organization (MPO)

## Policy Committee Members

- President, Village of Aroma Park (elected)
- President, Village of Bourbonnais (elected)
- President, Village of Bradley (elected)
- President, Village of Manteno
- Regional Engineer, IDOT (appointed)
- Mayor, City of Kankakee (elected)
- Chairman, Kankakee County Board (elected)
- Chairman, River Valley METRO
- Chairman, Kankakee Valley Airport Authority

## Technical Advisory Committee Members

- Village Engineer, Village of Aroma Park
- Village Engineer, Village of Bourbonnais
- Village Engineer, Village of Bradley
- Village Engineer, Village of Manteno
- Urban Planner, IDOT, District 3
- City Engineer, City of Kankakee
- County Engineer, Kankakee County
- Engineer, River Valley METRO Mass Transit District
- Manager, Kankakee Valley Airport Authority



MPO Policy and Technical Advisory Committee Members

# MPO Documents

The MPO produces a number of documents required by federal regulations. Shown below is the list of documents produced, a summary of what is in the document, the required schedule of publication, the current document, and the approval date by the MPO Policy Committee.

Document	Summary	Required Schedule	Current Document	Approval Date
Unified Work Program	Work program for the coming year, with staff time allocations, and expected work products	Annual	FY 2015 Unified Work Program	May 8, 2014 (due in May of each year)
Transportation Improvement Program	Listing of all projects which will utilize federal transportation funds in the next four years	Annual	FY 2015 Transportation Improvement Program	June 25, 2014 (due in June of each year)
Long-Range Transportation Plan	Estimation of the needs of the transportation system for the next 30 years	Every five years	2040 Long-Range Transportation Plan	May 6, 2015
Obligated Projects List	Listing of all projects obligated during the previous fiscal year	Annual	FY 2015 Obligated Projects List	Not required

Find these documents at <http://planning.k3county.net/transportation.htm>, the MPO website. Please navigate to “Transportation (MPO)” and click “Documents”.

# MPO Project Updates

Federal roadway funding is made available to the Kankakee Area Transportation Study in the form of Surface Transportation Program Urban (STPU) funding. The MPO Policy Committee jointly decides where these funds will be expended in the Kankakee Urbanized Area. In 2009, funding was also made available in the American Recovery and Reinvestment Act (ARRA).

Sponsor	Project Location	Cost
City of Kankakee	Brookmont Boulevard – Phase I	\$860,252
Village of Bradley	North Street – Phase I	\$735,734
Village of Bourbonnais	Latham Drive	\$1,070,775
Village of Aroma Park	3 <sup>rd</sup> Street and Bridge Street	\$301,334
Village of Bradley	North Street – Phase II	\$1,339,948
City of Kankakee	Brookmont Boulevard – Phase II	\$2,505,017
Kankakee County	River Road	\$814,000
Village of Aroma Park	Lowe Road	\$1,322,000
Kankakee County	Lowe Road	\$1,155,000
Village of Bradley	Cardinal Drive	\$1,661,343
Village of Bourbonnais*	Burns Road—Phase 1*	\$2,111,598*
Village of Bourbonnais	Burns Road—Phase 2	\$1,735,557

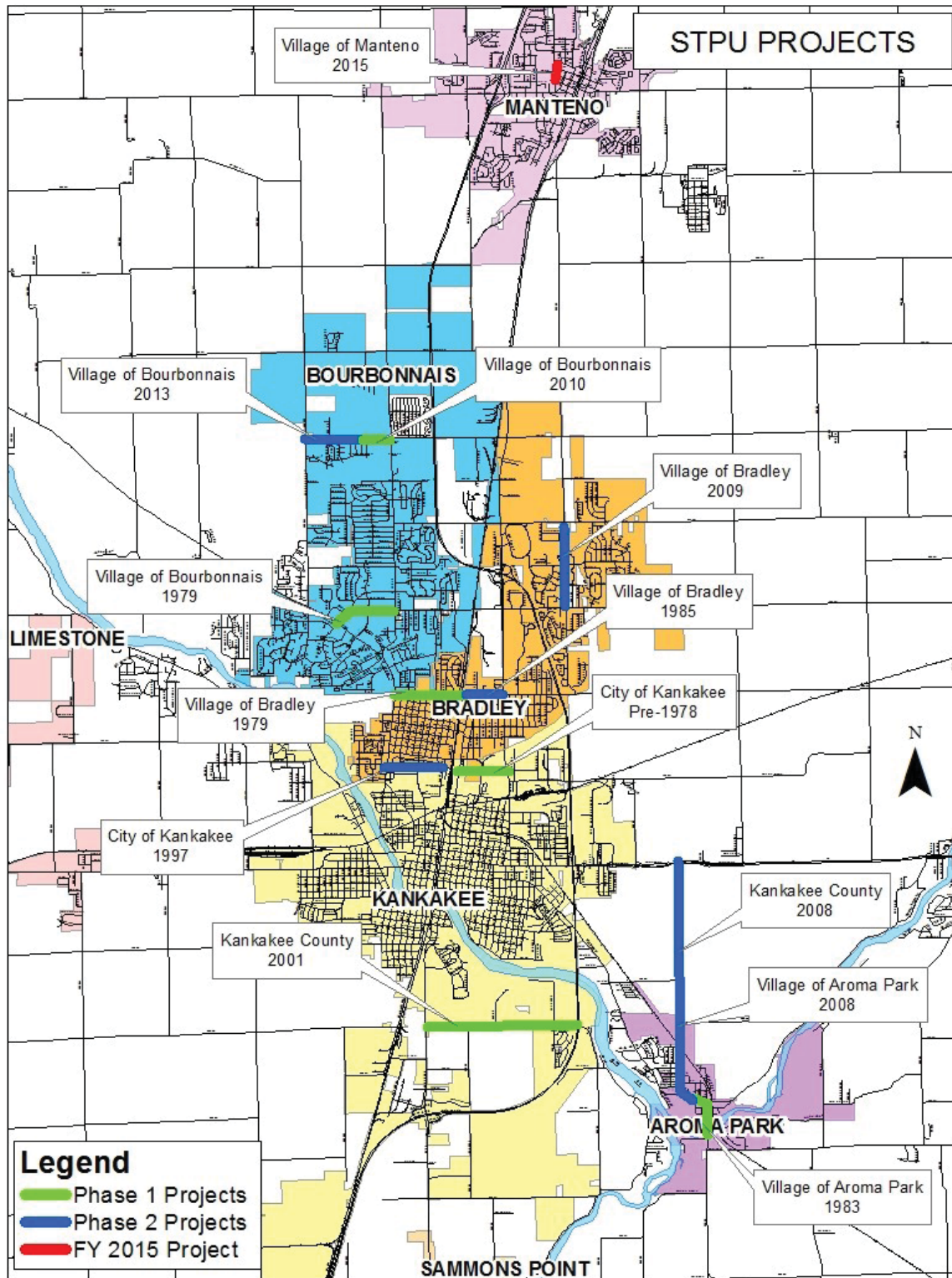
\*American Recovery and Reinvestment funding

The next project to be funded with STPU funding is in Manteno, on Maple Street from Third Street to Park Street. This project includes adjusting cross slopes, bringing sidewalk curb cuts to public right of way accessibility guidelines (PROWAG) compliance, and placing new pavement markings.

Sponsor	Project Location	Cost
Village of Manteno	Maple Street Third Street to Park Street	\$130,000

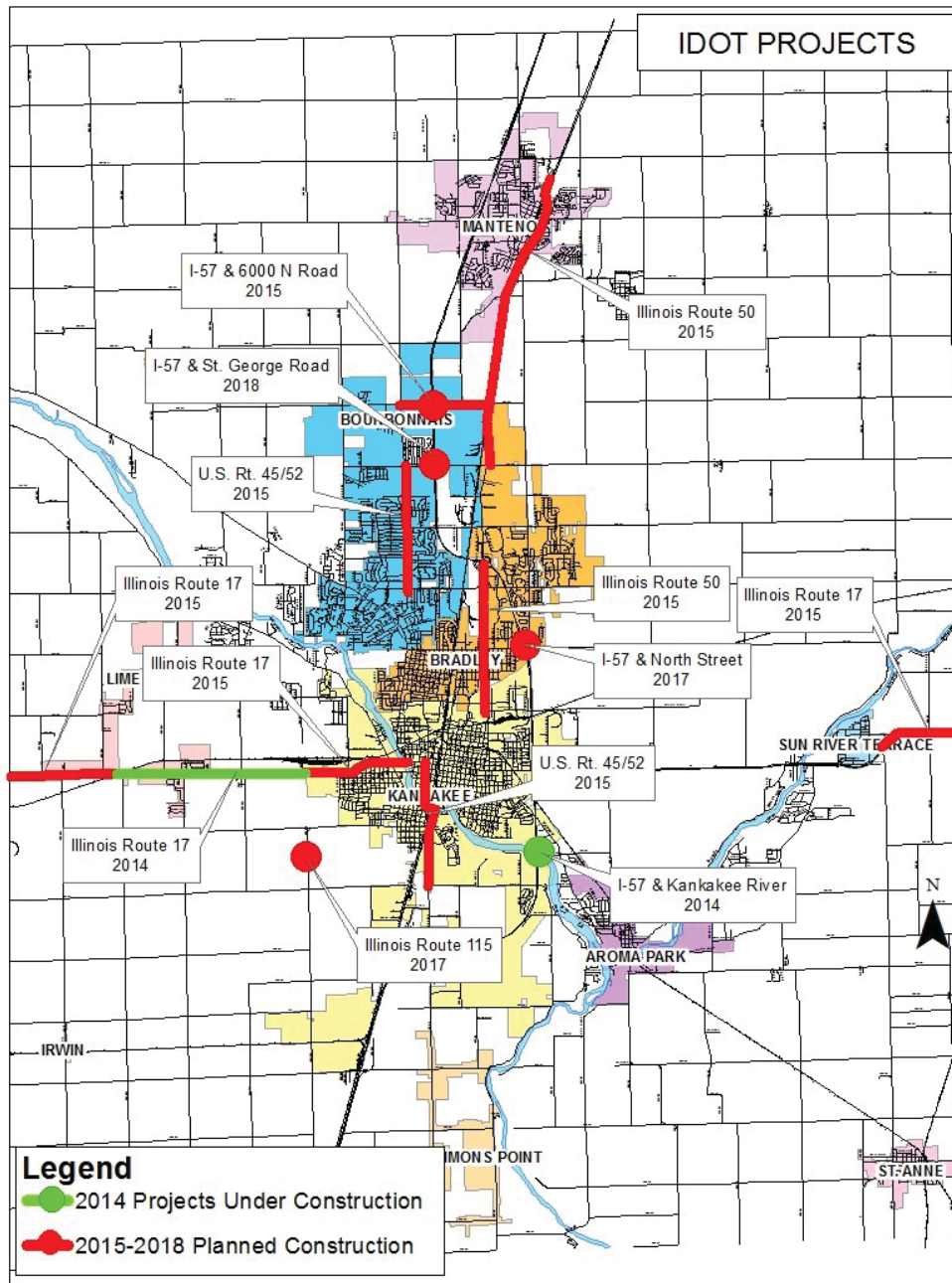
The map on the following page shows the locations of the projects that have been constructed with STPU and ARRA funds, and the years in which those construction projects were completed.

# MPO Project Map





# Area Project Updates



The map to the left shows the locations of the projects either under construction at present, or planned for construction within the coming four years.

The largest list of projects being done and planned for construction in the near future are those undertaken by the State of Illinois on the federal and state roadways.

Project	Cost and Funding Source
I-57: Kankakee River Bridge	<p><b>\$22,160,000 Total</b></p> <p><b>\$19,944,000 (Interstate Maintenance – Federal)</b></p> <p><b>\$2,216,000 (State of Illinois)</b></p>

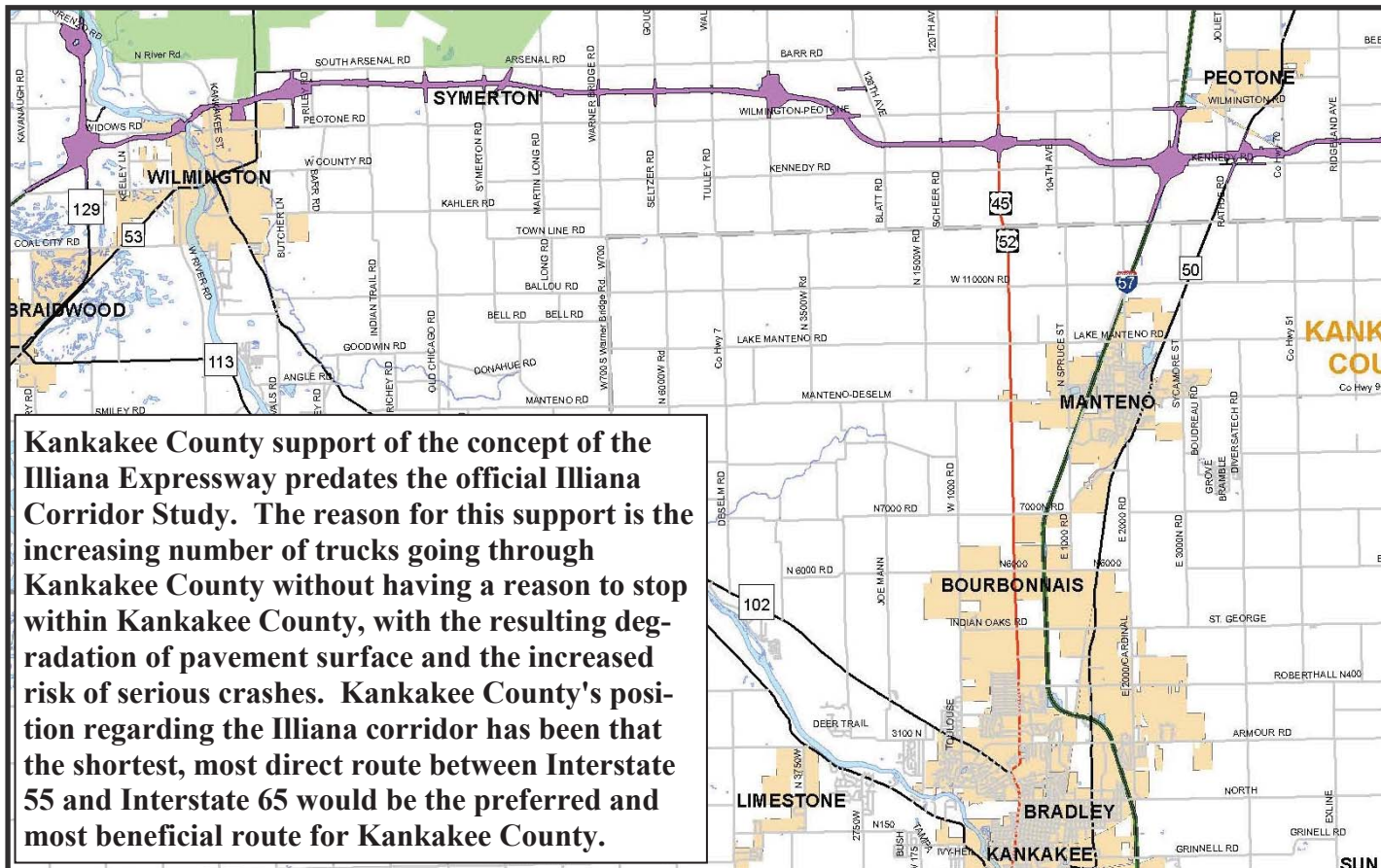


# Area Project Updates

Projects scheduled for construction in the current fiscal year and the coming three years on the State system in the Kankakee Urbanized Area include a new interchange at 6000 N. Road and a new bridge on Interstate 57 over the Kankakee River, both in FY 2015. The full list of projects is shown below:

Project	Type of Work	Cost	Year
I-57: @ 6000 N. Road	New Interchange	\$63,778,700 Total \$49,500,000 (Federal*) \$13,500,000 (State of Illinois) \$452,000 (Federal High Priority) \$326,700 (Local—Bourbonnais)	FY 2015
US 45/52: Armour Road to St. George Road	Milling and Resurfacing	\$1,300,000 (State of Illinois)	FY 2015
Illinois 50: North of St. George Road to North of Fifth Street in Manteno	Milling and Resurfacing	\$2,000,000 (State of Illinois)	FY 2015
IL 17 From West End of Kankakee Easterly to N. Fifth Avenue	Milling and Resurfacing	\$2,200,000 (State)	FY 2015
US 45/52 (Portion of Washington Street, East Street, Schuyler Avenue)	Milling and Resurfacing	\$1,300,000 (State)	FY 2015
IL 50 From I-57 Interchange in Bradley South to Grinnell Road in Kankakee	Milling and Resurfacing	\$1,300,000 (State)	FY 2015
IL 1/17: From IL 114 in Momence to the IL 1 & 17 (South) Junction Near Sun River Terrace	Milling and Resurfacing	\$1,600,000 (State)	FY 2015
IL 17: From Herscher Road (12000W Rd) East to NS RR	Milling and Resurfacing	\$1,850,000 (State)	FY 2015
IL-115 @ Gar Creek	Bridge Replacement	\$720,000 (Federal) \$180,000 (State)	FY 2017
I-57: Overhead Structure @ North Street	Bridge Replacement	\$5,000,000 Total \$4,500,000 (Federal*) \$500,000 (State of Illinois)	FY 2017
I-57: Overhead Structure @ St. George Road	Bridge Replacement	\$4,173,000 Total \$3,150,000 (Interstate Maintenance - Federal) \$400,000 (State of Illinois) \$97,000 (Local & Co. Hwy) \$386,000 STP-Bridge	FY 2018

# Illiana Expressway



The Illinois Department of Transportation (IDOT) and the Indiana Department of Transportation (INDOT) are partnering in the Illiana Corridor Study in accordance with the National Environmental Policy Act (NEPA). Due to its size and complexity, the project is being conducted as a Tiered Environmental Impact Statement (EIS). Tier One, which began in the spring of 2011, involved broad studies of a 950 square mile study area and the analysis of over 80 alternatives to obtain a preferred corridor. The Tier One EIS has been completed and a Record of Decision (ROD) was issued by the Federal Highway Administration (FHWA) on January 17, 2013. The Tier One ROD documented the selection of a preferred corridor to be carried forward for more detailed studies in Tier Two.

Tier Two is focused on more detailed studies of the selected corridor. IDOT and INDOT released the Tier Two Draft EIS for public comment on January 24, 2014 and held the public hearings for the project on February 18-19, 2014. IDOT and INDOT are currently in the process of evaluating all public comments received and preparing the Tier Two Final EIS, which will document the total impacts associated with the project and identify the right-of-way footprint. Once the Tier Two ROD is issued, IDOT and INDOT can move forward with acquiring land and constructing the roadway. The ROD is anticipated in late 2014.

**Four exits are proposed from the Illiana Corridor that will be of direct interest to Kankakee County. The most important of these is direct access from Interstate 57, so that vehicles never have to leave the limited access of Interstate 57 and the Illiana. Local exits of interest are at US Route 45/52, Illinois Route 50, and Illinois Route 1. The belief is that through trucks will use the restricted access offered by Interstate 57 and the Illiana, while trucks with deliveries and pickups in Kankakee County will have sufficient access through the three planned access points.**

**IDOT released a Request for Qualifications (RFQ) for the Illinois portion of the project on November 8, 2013. A total of five proposer teams responded to the RFQ. On January 17, 2014, IDOT announced that four proposer teams were shortlisted as eligible to continue bidding on the Illinois portion of the**

**Illiana project. Similarly, INDOT and the Indiana Finance Authority (IFA) issued an RFQ for the Indiana portion of the project on November 12, 2013. A total of six proposer teams responded to the RFQ, and of those six INDOT shortlisted four proposer teams as eligible to continue bidding on the Indiana portion of the Illiana project. IDOT and INDOT have met with the P3 bidder teams several times already to discuss the project, and anticipate issuing a final Request for Proposals (RFP) to select a final team once the Tier Two ROD is issued.**

11



# Rural Transit Update

Kankakee County has provided transit service in the rural areas of the county for a number of years under contract with SHOW BUS. At least one end of each rural transit trip must be outside the Urbanized Area.



Service is provided Monday through Friday each week on two kinds of rural service. Door to door service, which requires a 24 hour advance reservation provided in the rural areas, with certain parts of the county being served on different days. And a deviated fixed route service is provided between Momence and downtown Kankakee on Monday through Friday. The first bus leaves Kankakee at 4:00 A.M. and every hour after. The last bus leaves Kankakee at 5:00 P.M. and leaves Momence at 5:50 P.M.

Eastern portion of the County	5 days per week
Northern portion of the County	3 days per week
Southern portion of the County	3 days per week
Western portion of the County	2 days per week

For more information, please visit the SHOW BUS website at [www.showbusonline.org](http://www.showbusonline.org).

To schedule a ride, or to ask questions about the service, please contact SHOW BUS at 309-747-2545 or toll free at 800-833-7750 or 800-525-2454.



# Urban Transit Update

Transit service began in the Kankakee area in July, 1999 after an absence of over 40 years. In the 15 years since, the River Valley METRO Mass Transit District has provided over 7,000,000 rides. The current member agencies of METRO are the Villages of Aroma Park, Bourbonnais, Bradley, and Manteno, the City of Kankakee, Manteno Township, and Kankakee County.

Fiscal Year	Ridership	% Change
1999-2000	77,128	--
2000-2001	117,525	52.4
2001-2002	157,674	34.2
2002-2003	179,251	13.7
2003-2004	189,685	5.8
2004-2005	235,807	24.3
2005-2006	363,953	54.3
2006-2007	426,713	17.2
2007-2008	520,816	22.1
2008-2009	633,662	21.7
2009-2010	736,154	16.2
2010-2011	832,521	13.1
2011-2012	912,145	10.0
2012-2013	949,662	4.1
2013-2014	962,785	1.38
<b>Total</b>	<b>7,295,481</b>	<b>--</b>

Beginning in July 2013, METRO introduced the North-South Connector that provides service from KCC to the St. Vincent DePaul Transfer Centre. In January 2014, two new routes began. The Midway Airport Route, starting in Manteno. And the Momence Commuter route, from the Bourbonnais METRO Centre to downtown Momence and Baker and Taylor.

METRO also provides METRO Plus service, which is a shared ride program for people with disabilities that cannot board, ride, or disembark METRO's fixed route service.

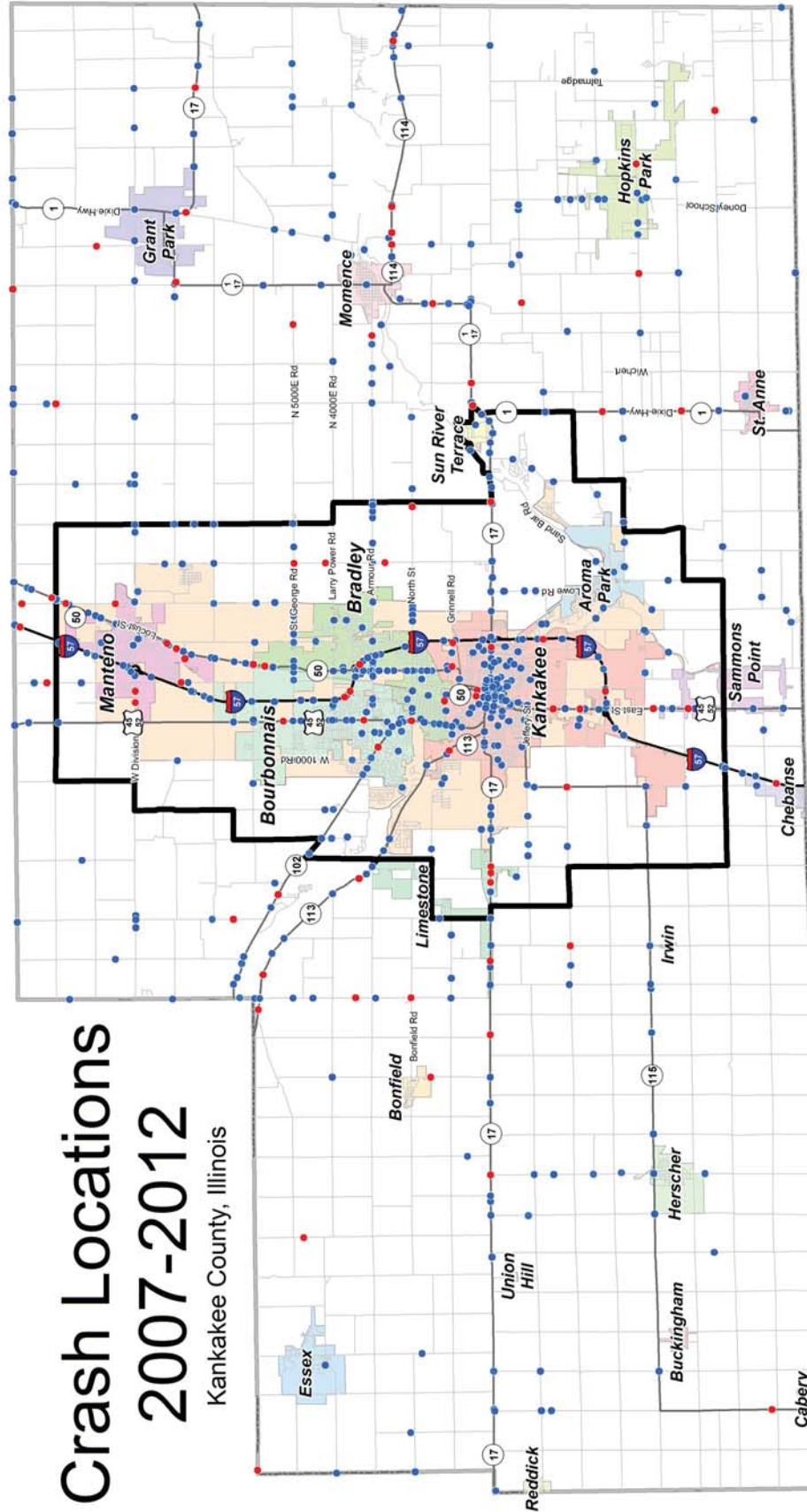
For service details on the transit service provided by METRO, please see the METRO website [www.rivervalleymetro.com](http://www.rivervalleymetro.com). Maps of each of the routes provided by METRO, as well as information on how to use that service are contained on the website.

Each fiscal year begins July 1 and ends June 30 of the following year.



# Crash Locations 2007-2012

Kankakee County, Illinois



## Legend

- Fatal Injury
- Serious Injury
- Classified Roads
- Non-Classified Roads
- Interstate
- MPA Boundary
- Urbanized Area
- Municipalities
- Kankakee County Boundary
- Non-Featured Roads

0 1.25 2.5 5 Miles



Map created by  
Planning Dept.  
Date: Nov 21, 2014

Disclaimer: This map is for reference only. Data provided for this map were obtained from various sources with varying level of accuracy. Kankakee Area Transportation Study (KATS) disclaims all responsibility for the accuracy or completeness of the data shown herein.

Data Sources: Street Centerlines (2013), Crash Locations (2007-2011) - Illinois Department of Transportation (2013), Other data - ILDOT, Kankakee County

738 total crashes in the County; 86 fatalities, 919 A-injuries.

# Safety Committee & Crash Research

The Illinois Dept. of Transportation ranked Kankakee County as 16th out of all the counties in Illinois for the highest number of fatalities and serious injuries for the five year period of 2007 - 2011. As a result, in early 2013 the MPO Policy Committee decided to form the Kankakee County Transportation Safety Committee. The direction of the Policy Committee was to include professionals from the areas of engineering, law enforcement, emergency response and education in a cooperative effort to address the issue of traffic safety.

The first meeting of the Safety Committee was held on March 13, 2013. A number of organizations have become members of the Safety Committee, and are shown below:

- Engineering and Planning (Aroma Park, Bourbonnais, Bradley, Illinois Department of Transportation, Kankakee, Kankakee County, Manteno)
- Law Enforcement (Bourbonnais Police, Bradley Police, Illinois State Police, Kankakee City Police, Kankakee County Sheriff's Police, Kankakee County Coroners Office, Manteno Police)
- Emergency Response (Bourbonnais Fire, Bradley Fire, Kankakee Fire, Limestone Fire, Manteno Fire, Riverside Ambulance)
- Education (Bradley/Bourbonnais High School, Herscher High School, Olivet Nazarene University, Aquinas Catholic Academy)
- Other Members: Hoekstra Transportation

These agencies have been meeting to discuss the vision, mission, and action items that will be pursued into the future. Various members have discussed the needs of their organization in the traffic safety arena, and training for members has been discussed and organized. These activities will continue, and recommendations from the Safety Committee will be brought to the Policy Committee for action.

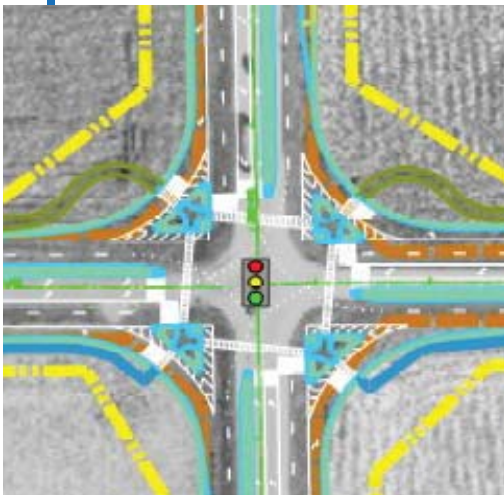
The map on page 14 shows the serious crash locations for six years, 2007-2012. The locations shown are based on data provided by the Illinois Dept. of Transportation (IDOT). Data has been provided through 2012 based on crash reports. Due to a time delay for processing the total number of fatalities and serious injuries, the official totals for 2012 have not yet been published.

Year	Fatalities	Serious Injuries
2007	17	177
2008	17	127
2009	11	158
2010	8	117
2011	15	161
Total	68	740

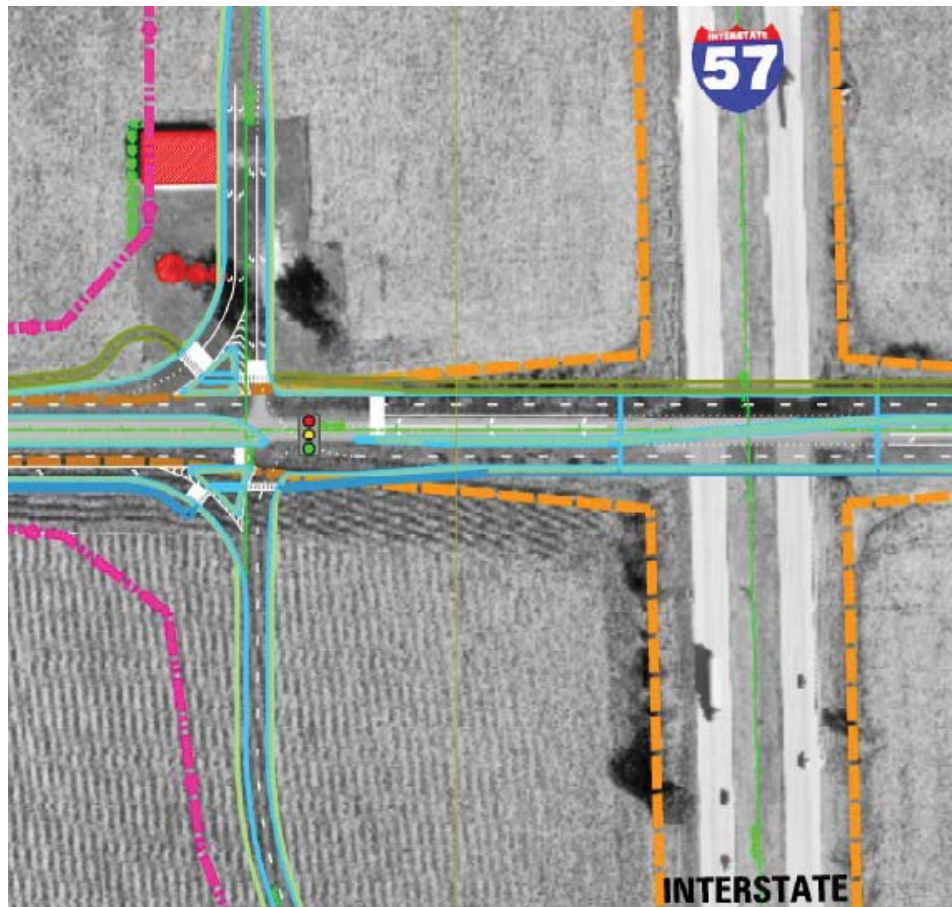


# 6000 N. Road Interchange Update

As the result of the Amtrak train crash of March 15, 1999, and in an effort to have direct access for trucks from the industrial area bordered by 4000 N. Road, U.S. Route 45/52, 7000 N. Road, and Illinois Route 50, Kankakee County proposed the addition of a new interchange to Interstate 57 at 6000 N. Road. This project is on the Illinois Department of Transportation program for FY 2015 (July 2014—June 2015) and is expected to be on a bid letting in January 2015.



US 45-52 @ 6000N Road

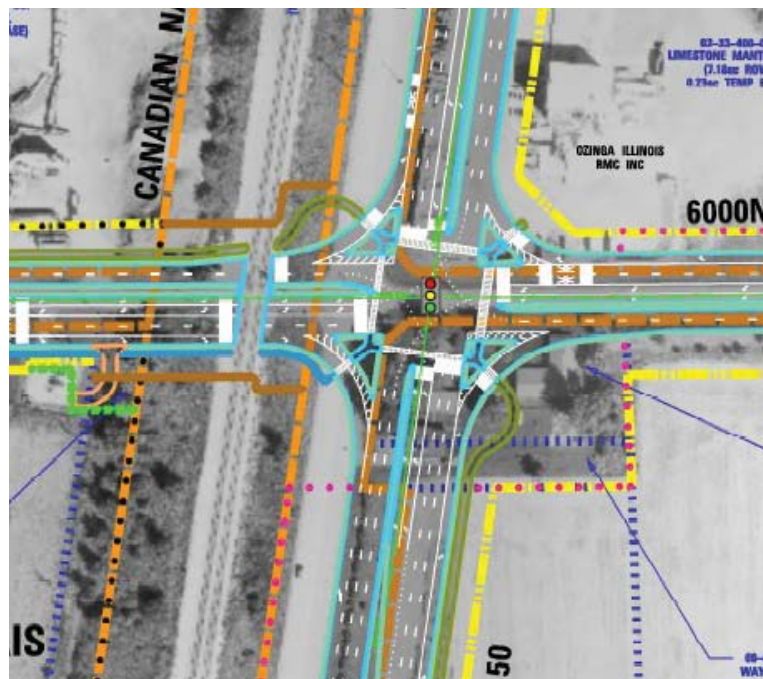


I-57 at 6000N Road



# 6000 N. Road Interchange Update

This proposal has been approved by the Federal Highway Administration, and has been the subject of engineering studies by the Illinois Department of Transportation. A design for the project has been finalized and is shown below. Three views are shown, that for the intersection of U.S. Route 45/52 and 6000 N. Road (the western end of the project), the interchange itself, and for the intersection of Illinois Route 50 and 6000 N. Road (the eastern end of the project).



IL Rt.50 @ 6000N Road

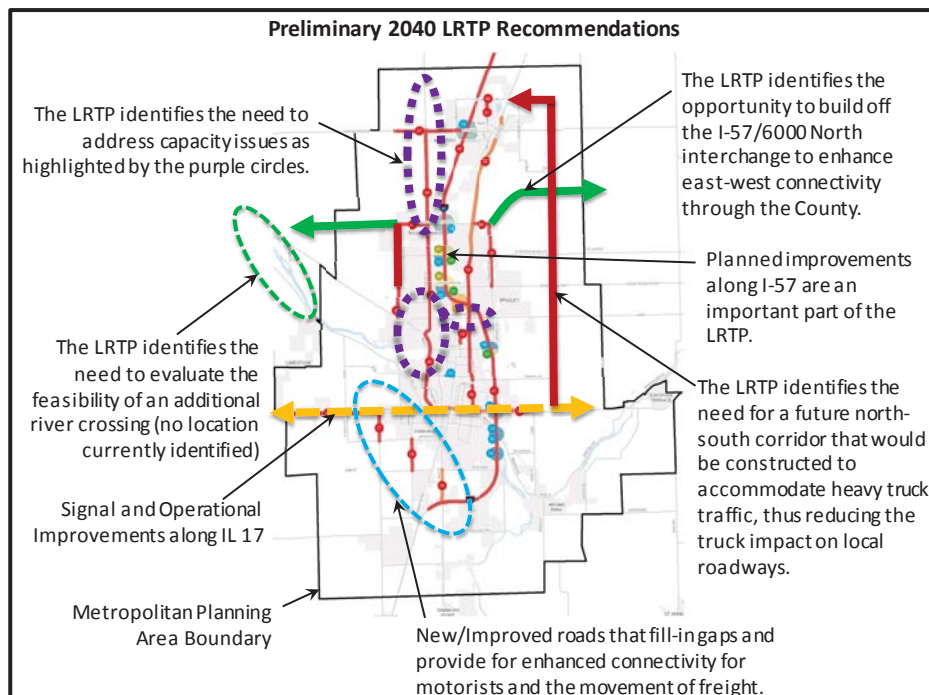
# Long Range Plan

The Kankakee Area Transportation Study (KATS) is in the process of updating the 2040 Long Range Transportation Plan (LRTP). As the designated Metropolitan Planning Organization (MPO), KATS is required by Federal law to update the LRTP every five years. The previous plan was adopted on May 12, 2010 and the 2040 LRTP update is set to be adopted by the KATS Policy Committee on May 6, 2015. The KATS Policy Committee, Technical Committee, and the Land Use and Transportation Subcommittee have been overseeing the planning process since November 2013.

The LRTP is considered to be long-range because it looks at the transportation needs over the next 25 years. The plan is multimodal, meaning that it addresses roadway improvements, transit services, bicycle facilities, and freight movements. Projects that are included in the 2040 LRTP become eligible to receive Federal transportation funding.

The preliminary 2040 LRTP recommendations are summarized in the graphic below. Generally speaking, the LRTP identifies the need to develop additional east-west and north-south roadways to better accommodate future year traffic and economic development. The construction of the 6000 N. Interchange at I-57 (see pages 16 and 17 for additional details) provides a great opportunity to develop an additional east-west connection through the County. Additional improvements are currently being considered by the KATS Policy and Technical Committees and will be further discussed and refined in early 2015.

As part of the planning process, a public survey was conducted in the summer of 2014 to help identify transportation issues/needs. Please check the MPO website (see page 20) in January 2015 for another opportunity to participate in a public survey that will help in the selection of potential transportation improvements.



# Land Use/Transportation Subcommittee Update

The Kankakee County Regional Planning Commission has a standing committee of citizens for transportation issues. This Subcommittee has been involved in all of the transportation issues that have faced Kankakee County for the past thirteen years and has offered advice and comments on these issues. The members of the Subcommittee are thanked for their service, and are listed below:

<b>Craig Bayston</b>	<b>David Bergdahl</b>	<b>Mel Blanchette</b>
<b>Bill Bukowski</b>	<b>Loretto Cowhig</b>	<b>Rich Howell</b>
<b>Jeff Jarvis</b>	<b>Chad Miller</b>	<b>Ralph Paarlberg</b>
<b>Samuel Payton</b>	<b>Chris Tholen</b>	<b>George Washington, Jr.</b>



**Mr. Payton, Mr. M. Blanchette, Mr. Meyer, Mr. Olson,  
Mr. Miller, Mr. Paarlberg, Mr. Bayston, and Mr. Jarvis**



# Citizen Input and Website Update



We want to thank you for taking the time to look at this brochure, the third in our continuing effort of informing the public about the transportation issues that face Kankakee County. We hope that this format is helpful to you. Every citizen of Kankakee County is a consumer of transportation services in the County and we value your opinion on your experiences.

We ask that you contact us with your comments about the brochure, and about the state of the transportation system in the County. You have a variety of ways to express those comments. You can send emails to [mlammey@k3county.net](mailto:mlammey@k3county.net). You can contact us at (815) 937-2940, or you can mail comments to us at the Kankakee County Planning Department, 189 E. Court Street, Kankakee, Illinois, 60901.

Another way that you can interact with our office is through the County website. You can access this website at <http://planning.k3county.net/transportation.htm>. If you have comments about material that you find on the website, please contact us. Thank you.

Mike Lammey  
Senior Transportation Planner

## Kankakee County Planning Department

189 E. Court Street  
Room 201  
Kankakee, IL 60901  
(815) 937-2940

Michael J. Van Mill, AICP, Director  
Michael B. Lammey, Senior Transportation Planner  
[mlammey@k3county.net](mailto:mlammey@k3county.net)

James M. Greenstreet, Transportation Planner  
[jgreenstreet@k3count.net](mailto:jgreenstreet@k3count.net)

Geoffrey Olson, Transportation Planner  
[golson@k3county.net](mailto:golson@k3county.net)

Michelle Sadler, Office Manager  
[msadler@k3county.net](mailto:msadler@k3county.net)

Melanie Grubbs, Office Assistant  
[mgrubbs@k3county.net](mailto:mgrubbs@k3county.net)

Delbert K. Skimerhorn, Sr., AICP, Planner, GIS Specialist  
[dskimerhorn@k3county.net](mailto:dskimerhorn@k3county.net)